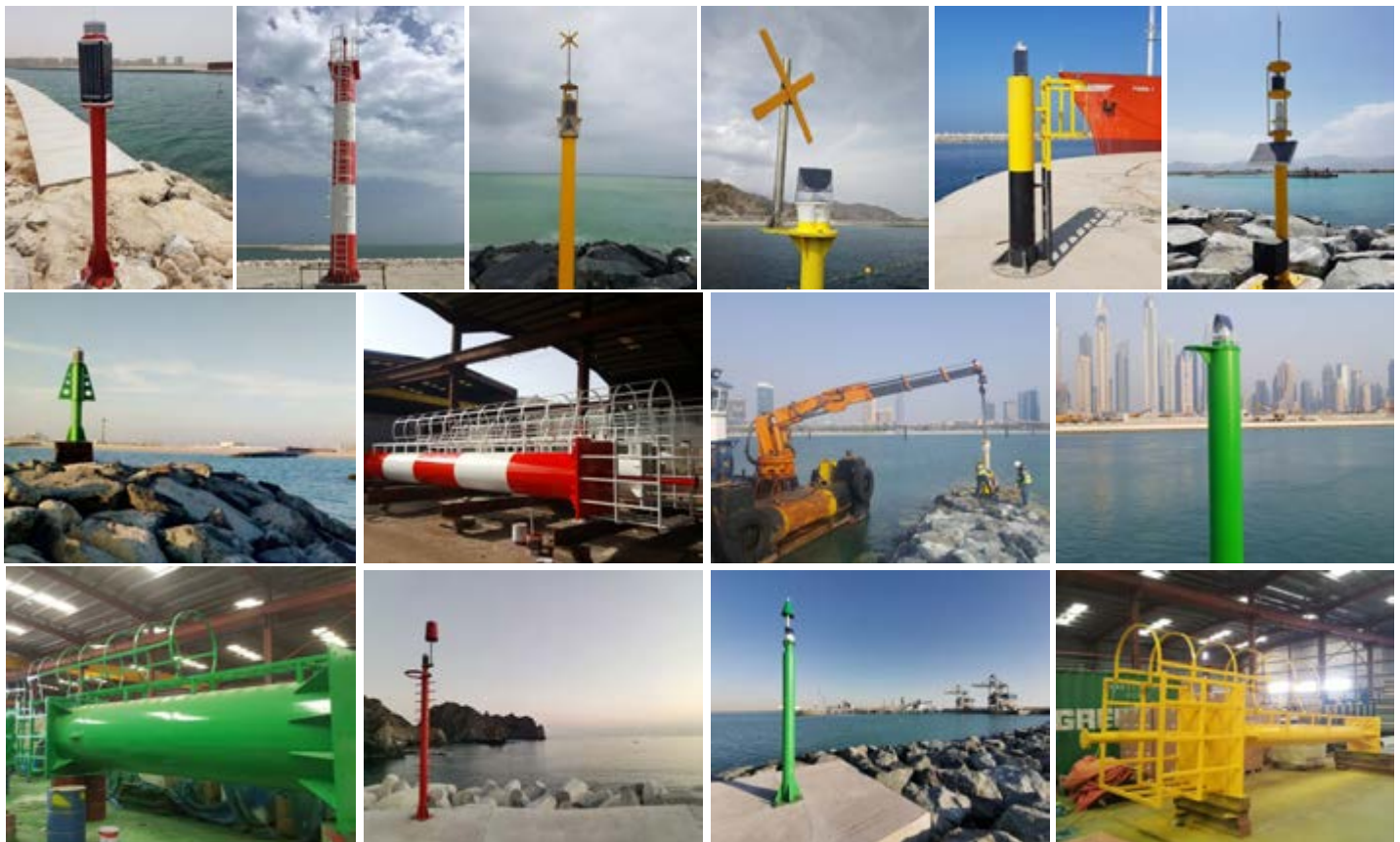


# Navigation Towers & Beacons



## Steel Fixed Markers TM-FS Series

The North West Marine is developed a range of customizable Steel Fixed Markers and towers. The Marker and Tower can be manufacture for Stainless steel, Mild Steel and Aluminum material and is proudly manufactured in the United Arab Emirates and complying to the IALA guidelines. The Fixed Markers can be manufactured and designed as per the client's specifications including engineered design calculations.



### Specification

<b>Length</b>	.5m to 25m
<b>Diameter</b>	50mm to 3000 mm
<b>Finish</b>	Painted, Powdercoated, Galvanized , anodized
<b>Material</b>	Stainless Steel , Mild Steel , Aluminum

### Applications

- Beaches swimming lines
- Separation buoys
- Fishing markers
- Dredging markers
- Construction buoys
- Demarcation barriers etc

### Accessories

- Top marks
- Navigation lights,
- Mooring points signage posts